

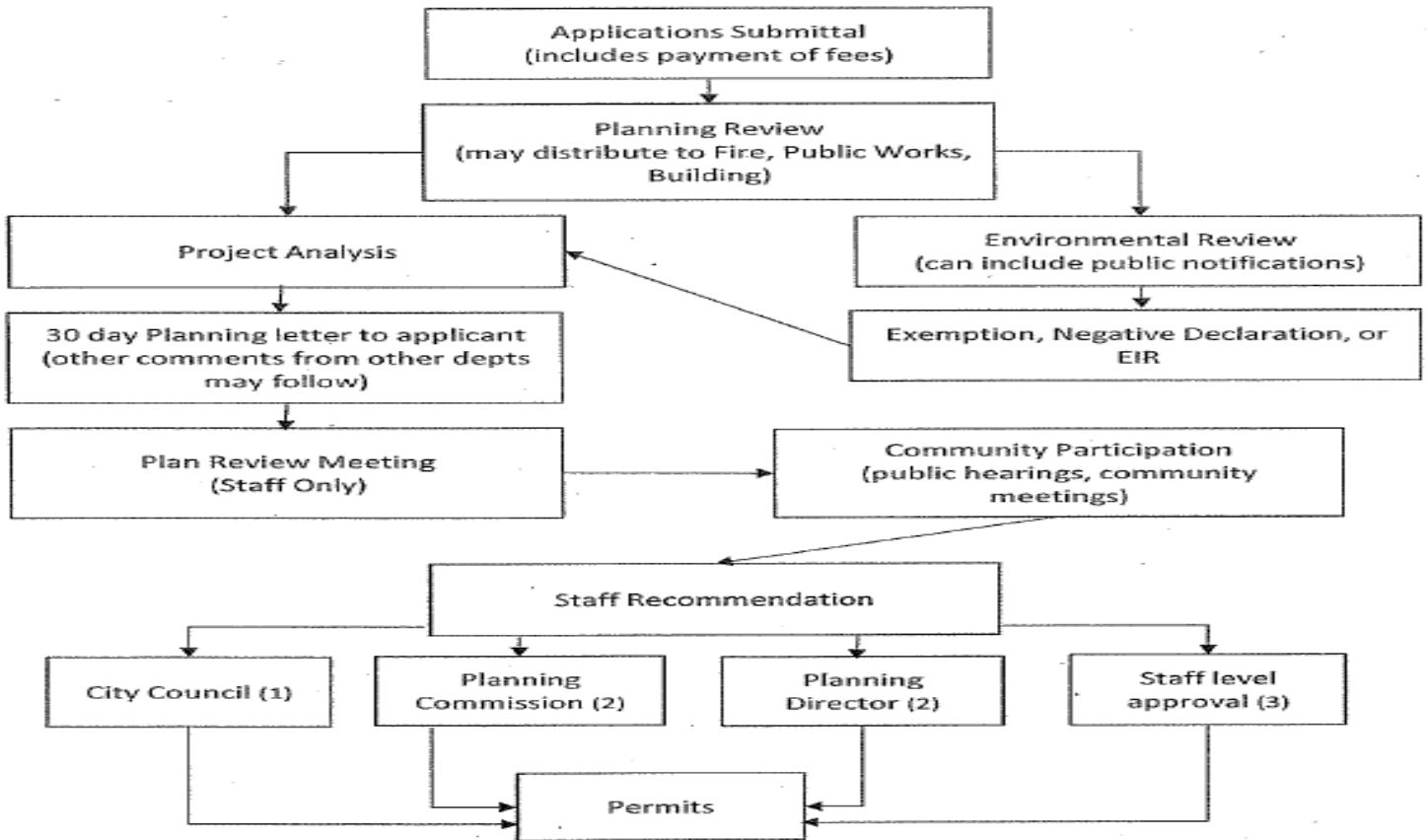


CURRENT PROJECT DESCRIPTION

The Page Street development will be new construction and is anticipated to be 6 floors of wood frame over concrete podium. It would include 81-studio apartments, and additionally one unrestricted on-site staff apartment. Parking will be provided at a ratio of .76 spaces to each residential unit, for a total of 62 spaces. The studios will be approximately 375 square feet with kitchens and ADA accessible bathrooms. Amenities included but not limited to; ample locked bicycle storage, offices for property management & services, eco-passes to residents to encourage the use of public transportation, laundry facilities, large community room with an attached kitchen, landscaped open space at the ground level that will provide a walking/recreational connection between Meridian Ave. and Willard Ave.

Thank you to all who have met with us over the last several months in our outreach efforts. It is important for us to gather community input. We appreciate your openness and willingness to grant us some of your time. Charities Housing is committed to developing and managing affordable housing and strives to create developments that contribute positively to communities. Healthy communities start with people who care, who fulfill a vision, and who gladly preform meaningful services. We firmly believe our contributions are essential to the creation of healthy communities. As always should you have any concerns or questions please contact Rosie Llanos-Popolizio at 408-550-8308 or via email at rlpopolizio@charitieshousing.org.

We submitted our application to the City Planning Department on September 1st. We expect to hear our first round of comments within the next couple of weeks. Typical Planning Process:



On occasion we were asked about parking lifts and how they work, here are a few videos demonstrating their potential use:

<https://www.youtube.com/watch?v=J4-W0vdDEuo>

<https://www.youtube.com/watch?v=xZx9zYl-Xjc>

Page Street made the Mercury News, in case you missed it here it is:

<http://www.mercurynews.com/2017/07/12/charities-housing-plans-80-90-affordable-studios-in-buena-vista/>

